



ANOFOL
International, Inc.

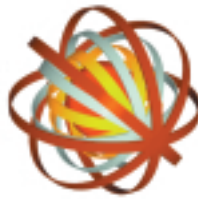
R E T R O F I T

**ANOFOL:
Manufacturing Pre-Anodized Aluminum Strip Since 1967.**

Thanks to continuous research and co-operation with the most important rolling mills, a wide range of products has been designed for the lighting, furnishings, interior design, giftware, lithographic and electrical industries.

ANOFOL's materials are particularly ideal for bending and roll forming, thanks to their anodic qualities. Plastic film application protects all surfaces without altering their properties. ANOFOL manufactures coils in gauges ranging from a minimum of 0.3mm to a maximum of 1mm.

On June 1, 2002, ANOFOL International, Inc. was formed as a partnership between ANOFOL S.r.l., and United States investors. ANOFOL International, Inc. operates



from the Atlanta, Georgia (USA) facility carrying a full line of products designed for the lighting industry. ANOFOL International's primary supplier will be ANOFOL S.r.l., located in Pioltello, Italy, in the Milan area. ANOFOL S.r.l., is an anod-

izer of the new Luxal® Enhanced Product along with Premium, Standard, Diffused and Hammertone qualities.

A High-Reflective white painted aluminum is also available. The facility in Atlanta will provide slitting, cut to length and blanking. The comprehensive inventory of anodized and white painted aluminum allows the company to supply processed slit and cut to length product for immediate delivery.

Please contact our field office at:

Tel: 800.325.7115

770.449.3454

Fax: 770.449.3677

Why Retrofitting with ANOFOL Improves the Quality of Light and Saves Energy.

The best way to retrofit a fixture is to increase its operating performance and increase light output. This only can be done by using an enhanced aluminum reflector with an energy efficient ballast.

ANOFOL International, Inc. is a distributor of ANOFOL S.r.l. which is a worldwide manufacturer of anodized and enhanced aluminum with total reflections > 91% * – which offers one of the best product lines in aluminum for retrofitting. Using anodized and enhanced aluminum possesses a high specularity to direct the light where it is wanted, preventing it from straying.

The quantity of ballast and lamps can be altered because the light can now be directed and controlled by the reflector to increase the luminaire efficiency.

*measured with Tecnodine total reflectometer TR2

Advantages of anodized and enhanced retrofit reflectors:

- ▶ 25 year warranty from date of purchase
- ▶ ANOFOL's anodized aluminum shall be free from defects in material and workmanship
- ▶ Durable finish
- ▶ Anti-static
- ▶ No delamination, blistering, peeling or cracking
- ▶ No yellowing or darkening
- ▶ Corrosion resistant
- ▶ UV-stable
- ▶ Abrasion resistant
- ▶ Easy to clean
- ▶ No iridescence
- ▶ Manufactured and controlled to UNI EN ISO 9001: 2000



Our Philosophy:
In the search for a continuing and constant evolution ANOFOL SRL has acquired and continues to acquire Certifications, in order to offer a better service to its Customers.

Quality Management to ISO 9001:2001

T8 Fixture

LTL number: 07177

Date: 12-16-2002

Prepared for: ANOFOL International, Inc.

Catalog number: FSL-23248-EAX-S2

Luminaire: Formed steel housing, formed specular aluminum "Luxal® Enhanced" reflector, no enclosure

Lamps: Two Philips F32T8/TL841 rated at 2850 lumens each

Ballast: One Sylvania QT2X32/277 IS-SC

Mounting: Surface

Lumen to candela ratio used = 9.18

Total input watts = 58.8 at 277.0 volts

The 0 degree plane is parallel with the lamps.

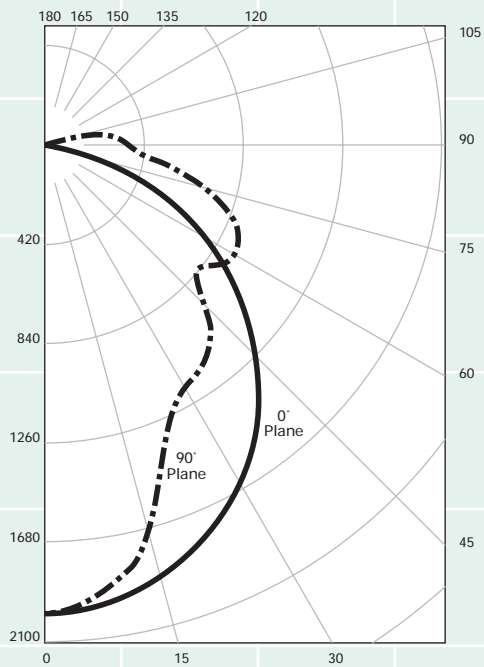
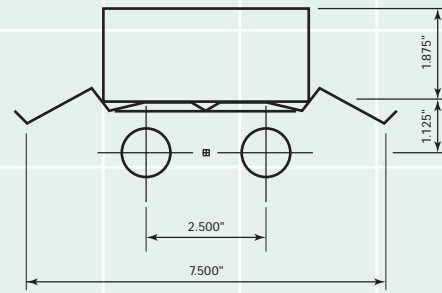
Total luminaire efficiency: 94.8%

Cie type: Direct

Plane: 0-Deg 90-Deg

Spacing criteria: 1.2 0.9

*Report prepared by Luminaire Testing Laboratory, Inc.
Tested by Herschel Schreck. Checked by Mike Grather.
Report based on LM-41 and other pertinent IESNA procedures.*



LIGHT
DISTRIBUTION
USING
**WHITE
PAINTED
INTERIOR**

*Results in
insufficiently
illuminated
working
plane.*



LIGHT
DISTRIBUTION
USING
**STANDARD
ANODIZED
ALUMINUM
REFLECTOR**

*Results in
illuminated
working
plane.*



T5 Fixture

LTL number: 07371

Date: 02-14-2003

Prepared fo: ANOFOL International, Inc.

Catalog number: RSH4/Luxal® Enhanced/4-2c

Luminaire: Formed steel housing, formed specular aluminum reflector, no enclosure

Lamps: Two 54 watt high output linear fluorescent T5 lamps rated at 4400 lumens each

Lamp catalog number: Sylvania FP54/830/HO

Ballast: One Sylvania QT2X54/277PHO

Note: This test was prorated to a four lamp, eight-foot luminaire test. This prorate is based on data from LTL test number 07366.

Mounting: Surface

Lumen to candela ratio used = 9.18

Total input watts = 119.1 at 277.0 volts

Total prorated watts = 238.2 at 277.0 volts

The 0 degree plane is parallel with the lamps.

Total luminaire efficiency: 99.7%

Cie type: Direct

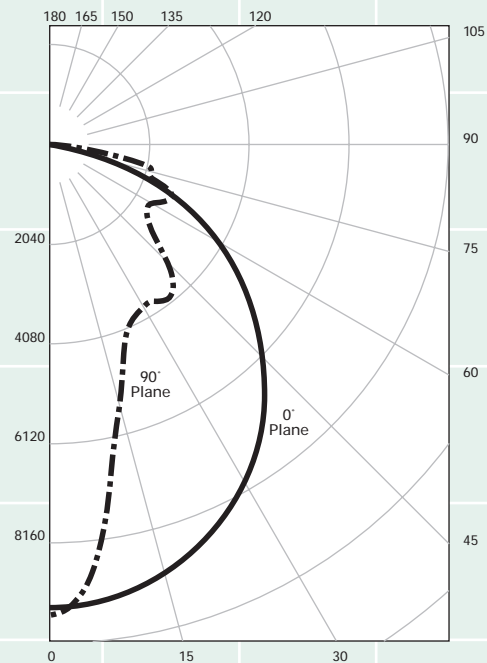
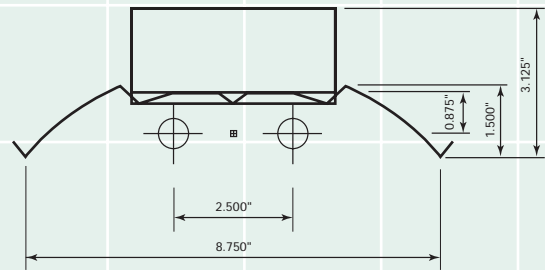
Plane: 0-Deg 90-Deg

Spacing criteria: 1.2 0.6

Report prepared by Luminaire Testing Laboratory, Inc.

Tested by Herschel Schreck. Checked by Mike Grather.

Report based on LM-41 and other pertinent IESNA procedures.



LIGHT
DISTRIBUTION
USING
**ENHANCED
ALUMINUM
REFLECTOR**

*Results in
optimally
illuminated
working
plane.*





ANOFOL International, Inc.

2920 Northeast Parkway
Atlanta, Georgia 30360

USA

Tel: 800.325.7115

770.449.3454

Fax: 770.449.3677

jimv@anofolintl.com

john@anofolintl.com



ANOFOL S.r.l.

Via Sansovino, 9/11
20096 Pioltello (MI)

Italy

Tel: +39/0292161152

Fax: +39/0292699991

www.anofol.com